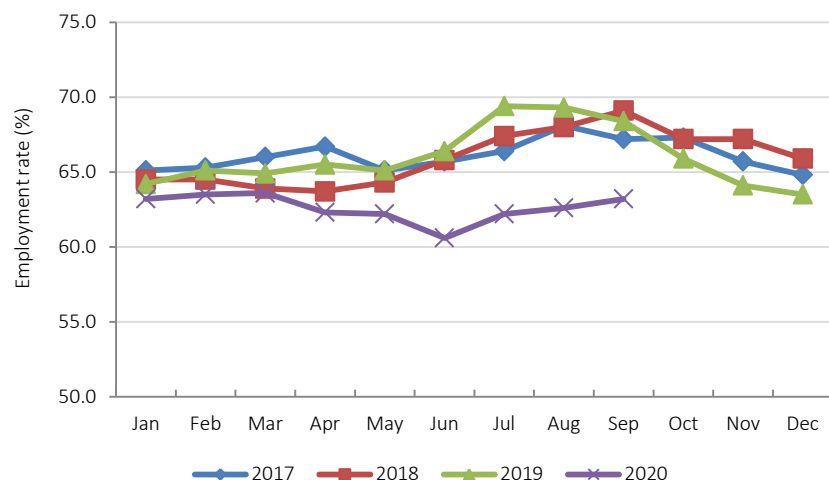


Labour Force Activity September 2020

Labour Force Survey information released by Statistics Canada today estimates the Northwest Territories' September 2020 employment rate at 63.2%, a 0.6 percentage point increase from the previous month. In spite of the increase, monthly employment rates in the territory post COVID-19 remain lower compared to previous years.

Figure 1: Employment Rates, NWT, 2017 - 2020



In September, employment increased by 200 with all gains concentrated in the private sector and in full-time employment. The increase in employment, coupled with people leaving the labour force, resulted in the number of unemployed persons dropping by 500 for an unemployment rate of 9.3%.

Employment rates by selected characteristics

Between September 2019 and September 2020, employment dropped by 1,500 persons, and the overall employment rate fell by 5.2 percentage points. Among the major worker groups, the decrease in the employment rate was highest among males and Non-Indigenous persons, dropping by 7.6 and 7.3 percentage points respectively.

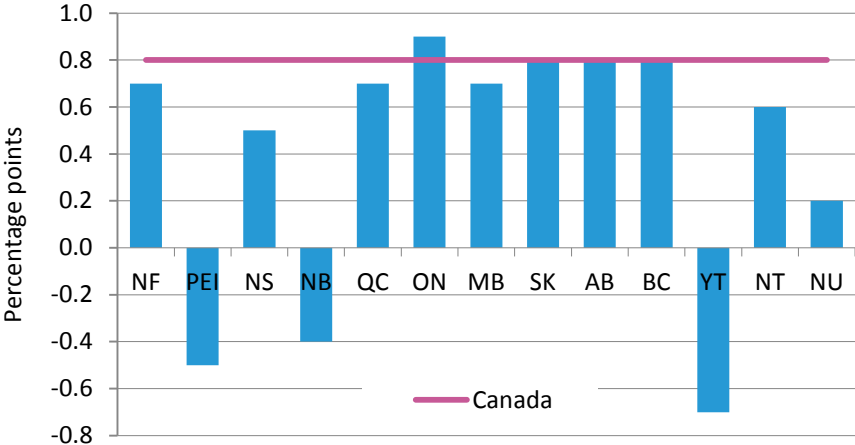
At the industrial level, the service-producing industry accounted for most of the year-over-year employment declines (-1,300), while the goods-producing sector lost 200 jobs. Over the same period, private sector employment decreased by 11% to 9,700, public sector employment decreased by 5.1% to 9,300, while self-employment increased marginally to 1,500.



National highlights

For Canada overall, the employment rate increased 0.8 percentage points to 58.7% between August and September 2020. During the same period, employment rates increased in all provinces and territories with the exception of Prince Edward Island, New Brunswick and Yukon (Figure 2).

Figure 2: Month-over-month change in Employment Rates, Canada, Provinces & Territories



Supplementary Indicators – Canada

Figure 3 shows information from two indicators developed by Statistics Canada to capture the impact of COVID-19 on the Canadian labour market. In September, the number of laid-off workers went up by 362,900 following a decline over the previous three months. Similarly, the number of employed persons who worked less than half of their usual hours increased for the first time in three months.

Figure 3: Supplementary Labour Force Indicators, Canada



Historical labour force activity

The following table presents historical labour force activity in the Northwest Territories.

Table 1: Labour Force Activity -Northwest Territories

	Population 15 & Over	Labour force	Employed Persons	Unemployed	Not in the labour force	Participation rate (%)	Unemploy- ment rate (%)	Employment rate (%)
Last 12 Months								
Sep-20	32,600	22,700	20,600	2,100	9,800	69.6	9.3	63.2
Aug-20	32,600	23,000	20,400	2,600	9,500	70.6	11.3	62.6
Jul-20	32,500	22,500	20,200	2,400	10,000	69.2	10.7	62.2
Jun-20	32,500	21,800	19,700	2,100	10,700	67.1	9.6	60.6
May-20	32,500	22,000	20,200	1,800	10,500	67.7	8.2	62.2
Apr-20	32,400	22,200	20,200	2,000	10,300	68.5	9.0	62.3
Mar-20	32,400	22,700	20,600	2,100	9,700	70.1	9.3	63.6
Feb-20	32,300	22,500	20,500	2,000	9,800	69.7	8.9	63.5
Jan-20	32,300	22,300	20,400	1,900	10,100	69.0	8.5	63.2
Dec-19	32,300	22,400	20,500	1,900	10,000	69.3	8.5	63.5
Nov-19	32,300	22,800	20,700	2,000	9,500	70.6	8.8	64.1
Oct-19	32,300	23,300	21,300	1,900	9,000	72.1	8.2	65.9
Previous Years:								
Sep-20	32,600	22,700	20,600	2,100	9,800	69.6	9.3	63.2
Sep-19	32,300	24,000	22,100	2,000	8,300	74.3	8.3	68.4
Sep-18	32,400	23,500	22,400	1,100	8,900	72.5	4.7	69.1
Sep-17	32,300	23,300	21,700	1,600	9,000	72.1	6.9	67.2
Sep-16	32,600	24,500	22,900	1,600	8,100	75.2	6.5	70.2
Sep-15	31,800	24,300	22,200	2,100	7,500	76.4	8.6	69.8
Sep-14	32,300	24,300	22,500	1,800	8,000	75.2	7.4	69.7
Sep-13	32,600	25,800	23,700	2,100	6,700	79.1	8.1	72.7
Sep-12	32,500	26,000	23,800	2,200	6,400	80.0	8.5	73.2
Sep-11	32,400	26,100	24,100	1,900	6,300	80.6	7.3	74.4
Sep-10	32,100	23,800	22,300	1,500	8,200	74.1	6.3	69.5

For additional information and detailed tables on the labour force survey results for the Northwest Territories, visit the NWT Bureau of Statistics website at <http://www.statsnwt.ca/> or call (867) 767-9169.

Next Release: November 6, 2020